

LA/OC SMTA CHAPTER NEWS

September 2003 EDITION

DATE

September 18th, 2003

AGENDA

6:00PM, Social Hour
7:00PM, Dinner/Presentation

MEETING FEES

\$20, Members
\$25, Nonmembers

MENU

TBD

LOCATION

Embassy Suites
3100 East Frontera
Anaheim, CA



RESERVATIONS

Call: MaskTek
(714) 557-3383

NO SHOWS WILL BE INVOICED

If you can not attend, please cancel your reservation by 12 Noon on Wednesday, prior to the meeting. See you there!

UP COMING EVENT

**LA/OC SMTA is proud to Present...
Chapter Training Month**

Date

October 16th, 2003

Time

8:00am, Check - In
9:00am to 4:30pm Presentation

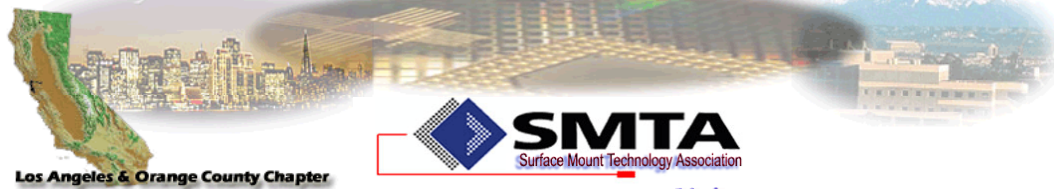
Location

Skyworks Solutions, Inc.
5221 California Avenue
Irvine, CA 92612
949.231.4993

Cost

\$160/person SMTA members
\$220/person Non-SMTA-members

See Page 7 for further Details!



"The Surface Mount Technology Association membership is a network of professionals who build skills by sharing practical experiences and developing solutions in electronic assembly technologies and related business operations."

LA/OC SMTA CHAPTER IS PROUD TO PRESENT...

Dick & Place Equipment Selection

Presented By:

Scott Wischoffer

Applications Engineering Manager

Fuji America Corporation

PRESENTATION ABSTRACT

The changing North American electronic industry and the response of equipment manufacturers to meet these changes has become a challenging task. It is even more challenging for the users to keep up with these changes.

This presentation is intended to assist the users with understanding these changes. The evolution of high volume equipment into the new requirements of the high-mix / low to medium volume production environment will be discussed. This will be followed by an overview of the four basic machine types currently available and the benefits and limitations of each type. This will include Conventional Equipment, Modular Base Equipment Modular Scalable Equipment, and All-in-one Equipment. Finally the important features in a high-mix environment will be reviewed as well as what scalability brings to the production environment.

SPEAKER PROFILE

Scott has been with Fuji America Corporation for 17.5 years. He began as a Service Engineer and has held positions as National Service Manager, National Training Manager and Engineering Manager.

Scott currently manages the Applications Engineering Department at Fuji, which is responsible for Utilization & Efficiency audits to help customers improve their production capabilities, technical sales support, technical articles and trade shows.

What's Inside this Months News Letter...

Page 2..... Presidents Message

Page 3..... August 2003 4th Annual SMTA/CCA Golf "Get Together" Review

Page 4/5..... 4th Annual SMTA/CCA Golf "Get Together" Sponsors (Thank You Sponsors!!!!)

Page 6.....SMTA International Information

Page 7.....October Chapter Training Program Information

CHAPTER OFFICERS*President*

Scott Penin, CSMTPE
 Paradigm Manufacturing LLC
 3304 W. MacArthur Blvd
 Santa Ana, Ca. 92704
 TEL: 714.438.0822
 FAX: 714.438.0028

E-mail: spenin@paradigmmanufacturing.com

Vice-President of Chapter Training

Atul Mehta
 Jet Propulsion Laboratory
 Pasadena, CA
 TEL: 818.393.2962
 FAX: 818.393.5055

E-mail: acmehta@jpl.nasa.gov

Vice-President of Technical Programs

Mike Schubert
 FCI Electronics
 Cypress, CA
 TEL: 562.356.2519

E-mail: MSchubert@fciconnect.com

Vice-President of Membership & Vendor Advertisement Chairman

Michelle Ogihara
 Seika Machinery, Inc.
 3528 Torrance Blvd., Suite 100
 Torrance, CA
 TEL: 310.540.7310

E-mail: michelle-o@jp.seika.com

Secretary

Kathy Palumbo
 Production Analysis & Learning Services, LLC
 Trabuco Canyon, CA
 TEL: 949.713.7229
 FAX: 949.713.7229

E-mail: palsrvs@palsrvs.com

Treasurer

Riki Brown
 Golden West Technology
 Fullerton, CA
 TEL: 714.738.3775
 FAX: 714.738.7727

E-mail: rikigb@earthlink.net

Golf Tournament Chairman

Frank Kurisu
 SolderMask, Inc.
 17905 Metzler Lane
 Huntington Beach., Ca. 92647
 TEL: 714.842.1987

Email: fkurisu@msn.com

Presidents Message

By: Scott Penin

To all those who missed the golf tournament, we're sorry you couldn't make it. It was one of our most successful golf tournaments ever.

We had over 100 golfers, 59 sponsors, and 20 volunteers. Everyone had a wonderful time and really enjoyed themselves. It was a great day to be out enjoying the sun and having fun with a great group of folks from a wide range of disciplines.

Frank Kurisu with SolderMask, Inc once again did an outstanding job in organizing and managing the event. We would not know what we would do without him. Thanks Frank!

The overview on the following page is an email sent from Michelle Ogihara, our VP of Membership, to our Board of Directors. I believe this e-mail identifies the spirit, effort, and attitude of our members.

So, please take the time to read the message for a synopsis of last months meeting and thank you to everyone who helped make the "4th Annual Golf Get Together" a success!

Hope you all had fun too!

AUGUST 2003 GOLF REVIEW

BY: MICHELLE OGIHARA

Hello Everyone,

This brief (somewhat) note is to express appreciation to all participants in this year's SMTA/CCA Golf Tournament. Congratulations and a vote of confidence goes to Frank Kurisu of SolderMask, Inc who once again did a magnificent job of organizing and chairing the successful event. It keeps getting bigger and better every year!

Kathy and I really enjoyed running the renegade Aloha beverage cart with the sole purpose of making sure that the players were well-hydrated and happy. Many thanks to Steve Wittenberg of SMT Dynamics for the smooth Baccarat cigar. Got to put that on the must-haves for the volunteer list next year.

Most of you know by now that this tournament was an especially difficult event to pull off for a variety of reasons. With the economy down and manufacturing moving overseas - lay-offs, consolidations, budget-trimmings and extra-work loads have become commonplace within our industry. Every one of us has experienced these situations in one form or another. As a business owner under these circumstances, Frank had make sure that his own ship was running smoothly while coordinating the tournament preparations. He somehow managed to convince (cajole, plead, threaten) 59 sponsors to fork out and support this wonderful event. He then sought and obtained over 20 volunteers to help during the tournament. He made deals with all suppliers concerned whether it was for the signage printed, the excellent prizes selected, the beverages purchased or the dealings with the California Country Club venue. Many special touches that only Frank could come up with such as the specially engraved laser-printed trophy's to magnet-backed name tags for each volunteer materialized. He even called me the night before after thinking up another thoughtful gesture to obtain gift certificates for the lady golfers as a special thank you for participating. The last email sent to all volunteers and participants from Frank was to make sure that we all SMILED and ENJOYED ourselves during the special day because that's really what this was all about, anyways, wasn't it?

All of this while he was still mourning the very recent passing of his dear mother, Rosie, a native of Hawaii.

It was a very special heart-felt tribute paid to the beautiful Aloha spirit of Rosie during this tournament. I would like to thank all of the volunteers, board members and players who turned up decked out in Hawaiian shirts and hats in support of Frank on this day. A very special thank you to Pat Lopez of ADS Gold and Lee Snyder of Prestige Metal Recyclers for presenting such beautiful fragrant real leis to Frank. From the front of the banquet room viewing the sea of familiar faces, some veterans in the industry, others friends or newbies, decked out in Hawaiian shirts and silk leis was a sight to behold!

A big thank you also to Kathy and Joe Palumbo of PA&LS for putting together a delicious Italian gift basket for Frank and Laura to enjoy during their recuperation after the event.

The success of this tournament will be measured in so many more ways other than financially for our two industry non-profits. Yes, we did make money but more importantly, we proved that despite the difficulties and obstacles thrown in our path, we came together to support, encourage one another and with fighting spirit to win!

I'd like to share this special poem that I gratefully received from my own eleven-year old daughter:

Life is filled with obstacles
Filled with anger, happiness, sadness and joy
It feels like a long roller coaster that never ends

There are loops, dips, turns and drops
And long moments in a long, dark tunnel
But I can get through it knowing that my mom will
always be the Light at the end of the tunnel

Frank, your Mother's Aloha spirit lighted the way throughout the tournament and will no doubt carry on in your life. Thank you for this special day!

Best regards,
Michelle Ogihara
Seika Machinery
SMTA VP of Membership

2003 SMTA/CCA GOLF TOURNAMENT SPONSOR LIST
3M

2nd Year Sponsor
<http://www.3m.com>

A-CAL / Associated Calibration, Inc.

1st Year Sponsor
 714.996.2042 / Jerry Schwartz

ADS Gold, Inc.

3rd Year Sponsor
 714.632.1888 / Pat Lopez

Advanced Book Keeping Service

1st Year Sponsor
 714.842.4911 / Susan Le Bouf

AIM Solder

1st Year Sponsor
<http://www.aimsolder.com>

Allen, Haight, Cooney & Monaghan, LLP

3rd Year Sponsor
<http://www.ahcllp.com>

AMTECH, Inc.

1st Year Sponsor
<http://www.amtechinc.com>

Burkle North America

3rd Year Sponsor
<http://www.burkleusa.com>

C.A. Picard, Inc.

1st Year Sponsor
<http://www.www.capicard.com>

Christopher Associates, Inc.

2nd Year Sponsor
<http://www.christopherweb.com>

Coates Circuit Products

1st Year Sponsor
<http://www.coates-screen.com>

Custer Consulting Group

2nd Year Sponsor
<http://www.custerconsulting.com>

DEK

1st Year Sponsor
<http://www.acumenstencils.com>

Dow Corning

1st Year Sponsor
<http://www.dowcorning.com>

DuPont Electronics

3rd Year Sponsor
<http://www.dupont.com>

eMT

3rd Year Sponsor
<http://www.emtllc.com>

FastSigns

2nd Year Sponsor
<http://www.fastsigns.com/193>

Fein - Line Associates

1st Year Sponsor
<http://www.www.feinline.com>

Florida Cirtech, Inc.

1st Year Sponsor
<http://www.floridacirtech.com>

GC Aero, Inc.

1st Year Sponsor
<http://www.gcaero.com>

GemTech, Inc.

2nd Year Sponsor
<http://www.gemtechpowder.com>

Intelicoat

3rd Year Sponsor
<http://www.intelicoat.com/>

I-Source Technical Service, Inc.

3rd Year Sponsor
<http://www.i-source.com>

Larson Associates

2nd Year Sponsor
<http://www.consultlarson.com>

Lewis & Clark, Inc.

1st Year Sponsor
<http://www.lewis-clark.com>

Microtek Laboratories

1st Year Sponsor
<http://www.thetestlab.com>

Mirtec - AOI

1st Year Sponsor
<http://www.mirtec.com>

National Graphic Supply

3rd Year Sponsor
<http://www.ngspcb.com>

Omni Training Corp

3rd Year Sponsor
<http://www.omnittraining.com>

Paradigm Manufacturing, LLC

1st Year Sponsor
<http://www.paradigmmanufacturing.com>

2003 SMTA/CCA GOLF TOURNAMENT SPONSOR LIST
Perkin Elmer Optoelectronics

1st Year Sponsor

<http://www.perkinelmer.com>**Petlock, Inc.**

2nd Year Sponsor

<http://www.petlock.com>**Phibro-Tech, Inc.**

1st Year Sponsor

<http://www.phibrochem.com>**P. Kay Metal, Inc.**

2nd Year Sponsor

<http://www.pkaymetal.com>**Practical Components**

3rd Year Sponsor

<http://www.practicalcomponents.com>**Prestige Metal Recyclers, Inc.**

2nd Year Sponsor

<http://prestigemetal.uswestdex.com>**Prime Technologies**

1st Year Sponsor

714.513.2266 / Vince Cestra

Production Analysis & Learning Services, LLC

3rd Year Sponsor

<http://www.palsrvs.com>**Production Technology**

3rd Year Sponsor

<http://www.prod-tech.com>**RBC Dain Rauscher**

1st Year Sponsor

<http://www.rbcdain.com>**REStronics Southern California**

2nd Year Sponsor

<http://www.restronics.com>**Revco Products, Inc.**

1st Year Sponsor

<http://www.revcoproducts.com>**Saati Print**

2nd Year Sponsor

<http://www.saatiprint.com>**Salmon & Shroeder, Inc.**

1st Year Sponsor

<http://www.salmon-schroeder.com>**Seika Machinery**

2nd Year Sponsor

<http://www.seikausa.com>**Siemens Dematic**

3rd Year Sponsor

<http://www.siemens.com>**Shiple Company, L.L.C.**

1st Year Sponsor

<http://www.shiple.com>**SMT Dynamics**

4th Year Sponsor

<http://www.smt.com>**Solder Master Supply Company**

1st Year Sponsor

818.704.0668 / Bruce Umemoto

SolderMask, Inc.

4th Year Sponsor

<http://www.soldermask.com>**Spec Elite, Inc.**

2nd Year Sponsor

<http://www.specelite.com>**Superior Processing**

1st Year Sponsor

<http://www.superior-processing.com>**Surface Mount Techniques (SMT)**

4th Year Sponsor

<http://www.smtprinters.net>**Taiyo America, Inc.**

1st Year Sponsor

<http://www.taiyo-america.com>**Technic Inc.**

2nd Year Sponsor

<http://www.technic.com>**Technical Devices Company**

4th Year Sponsor

<http://www.technicaldev.com>**Tech-Source**

2nd Year Sponsor

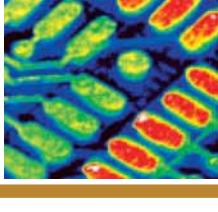
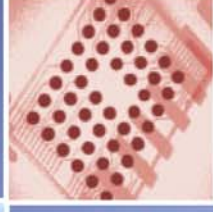
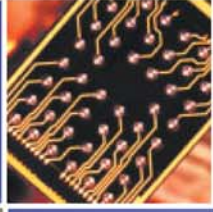
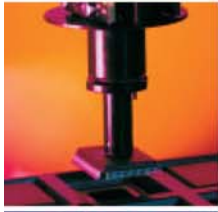
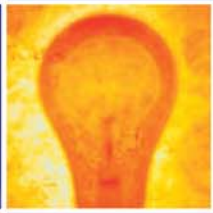
<http://www.tech-sourceintl.com>**Tritek Circuit Products, Inc.**

1st Year Sponsor

<http://www.tritekcp.com>**Wells Fargo Bank**

1st Year Sponsor

<http://www.wellsfargo.com>



Learning Today for Tomorrow's Demands

Chicago

**The industry's
best technical conference
on electronic assembly
and advanced packaging.**

September 21-September 25, 2003

Donald Stephens Convention Center
Rosemont, Illinois

P: 952-920-7682
smta@smta.org

F: 952-926-1819
www.smta.org

LA/OC SMTA is Proud to Present October's Chapter Training Program... Low Volume Surface Mount Assembly

Presented By: Rob Rowland
Process Engineering Manager, RadiSys Corp.

What You Will Learn: Low volume surface mount assembly processes are unique and challenging. This workshop identifies and examines the critical success factors associated with low to medium volume, high mix surface mount assembly. Participants will examine low volume assembly from multiple viewpoints including assembly processes, process control, manufacturing operations and related industry standards. When these topics converge successfully a robust low volume assembly operation has been established.

The morning session is devoted to semi-automated and automated equipment and processes related to standard, fine pitch and ball grid array components on simple and complex single or double-sided mixed technology assemblies. The following printed circuit board assembly (PCBA) processes will be covered: printing, dispensing, placement, reflow soldering, wave soldering, selective soldering and cleaning. A four step approach, which includes theory of operation, recommended operating parameters, process control and related industry standards, will be used to explain each assembly process. Subject matter related to adhesive, solder, flux, solder paste and stencil design will also be covered in detail. The afternoon session covers printed circuit board (PCB) surface finishes and moisture sensitive components and their impact on the assembly process. The discussion continues with an overview of manufacturing operations related topics including assembly line design, continuous flow assembly, lot size considerations, inspection methods (optical and x-ray) and performance measurement. A critical subject will be rapid setup and changeover methods, which includes a case study example. A list of assembly equipment suppliers is also included with the course material.

Who Should Attend: This workshop is intended for individuals who are starting a new surface mount assembly operation or individuals who are interested in fine tuning their existing surface mount assembly operations. The information presented in this workshop will be beneficial to anyone involved with surface mount assembly including manufacturing, process and quality engineers, engineering and manufacturing managers or supervisors, and equipment operators. Some basic knowledge of surface mount technology is helpful but not essential.

Topics: Low volume assembly processes and equipment, Adhesive and solder paste application, Component placement, including BGA, Reflow, wave and selective soldering, Adhesive, solder, flux and solder paste Cleaning and no-clean applications, PCB surface finish and moisture sensitive devices, Assembly line layout and material handling, Visual factory management techniques, Optical and x-ray inspection methods, Process control and process quality planning, Rapid setup and changeover methods, Related industry standards (IPC, EIA, SMEMA)

About The Instructor: Rob is currently the Process and Supplier Engineering Manager at RadiSys Corporation in Hillsboro, Oregon. Rob has focused on surface mount and through-hole mount manufacturing technology for the past 20 years. He is an active member of the Surface Mount Technology Association (SMTA), where he served 2 terms as a chapter president and 4 terms as technical director of SMTA International. In 1999 he received the Founders Award from the SMTA. He was also an active member of the Surface Mount Council (SMC) where he served as editor of the Status of the Technology, Industry Activities and Action Plan. Rob is a frequent author and speaker at industry trade events. He also writes a monthly manufacturing column for SMT Magazine in addition to serving on the editorial advisory board. Rob is the co-author of the book Applied Surface Mount Assembly. He received a Bachelor of Science Degree in Manufacturing Engineering from Weber State University.

COST: \$160.00 Members / \$220 Non-Members

LOCATION: Skyworks Solutions, Inc., 5221 California Avenue, Irvine, CA 92612, 949.231.4993

CHECK-IN: 8am

CLASS HOURS: 9AM -4:30pm

DATE: October 16th, 2003

TRAINING INCLUDES: Lunch, Coffee & Handouts

REGISTRATION: 952.920.7682 or On-Line at

http://www.smta.org/education/chapter_training/chapter_training.cfm#LA



Get Connected!

CHECK OUT

Chapter News
 Technical Articles
 Membership Directory
 SMTA News
 Books

www.smta.org

Those of you who are receiving this newsletter by U.S. mail, please forward your e-mail address to:

info@paradigmmanufacturing.com

...so that we may e-mail the news letter to you. This helps lower our distribution costs, which means more benefits for our members.



**Isn't It time...
 You advertised...**



	Business Card	1/4 Page	1/2 Page
1 Month	\$ 50.00	\$ 90.00	\$ 175.00
1/2 Year (5 Issues)	225.00	400.00	750.00
1 Year (9 Issues)	375.00	675.00	1,200.00

Submission Guidelines

Acceptable Artwork Formats: .pdf, .jpg, .bmp, .gif, .tif, html, & Camera Ready Artwork. Laser Printed Pages will not be accepted.

Acceptable Font Style: Graphic, MSWord, or html.

AD SIZES	WIDTH	LENGTH
Business Card	3.75"	2.25"
1/4 Page	3.75"	4.75"
1/2 Page	7.75"	4.75"
OR	3.75"	9.75"

Schedule

Ads should be submitted at least one week prior to the end of the month preceding the first month of desired publication.

Vendor Tables

Display your products and literature at a Chapter Meeting for a fee of \$100, and receive a bonus of one free 1/4 page AD for one month.

Contact

Scott Penin

Call: (714) 403-1874 / E-Mail: info@paradigmmanufacturing.com

Don't Forget....

December is Time to PARTY!

Come Join the FUN at our...

2003 Annual LA/OC & San Diego SMTA Chapter

Christmas Party

Location: Sarducci's Capistrano Depot / <http://www.capistranodepot.com>
 By the AMTRAK Train Station in Downtown San Juan Capistrano

Featuring: An Award Winning 3 Piece Band

Date: Friday, December 12th, 2003

Time: 6pm to 11pm

Cost: \$25 members / \$35 non-members

Menu: TBD